

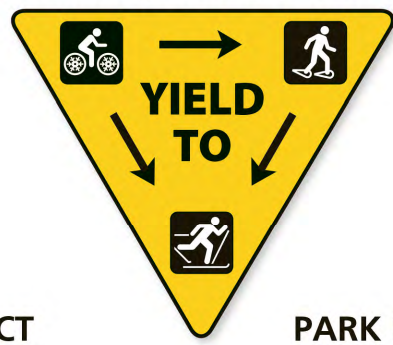
MOUNT SPOKANE STATE PARK WINTER TRAILS MAP

- Road
- 25 Groomed Nordic Trail & Trail Number/Name
- 0.5 Ungroomed Trail with Mileage
- Groomed Snowmobile Trail (Multi-Use)
- Ski Lift
- Trail Junction
- Snowmobile Play Area
- Alpine & Nordic Areas are Snowmobile-Free Zones
- Mount Spokane State Park
- Natural Area Preserve

PRIVATE PROPERTY
Please do not trespass. Know where you are located at all times and obey all posted signs.

- Entrance Station
- Toilet
- Parking
- Picnic Area
- Trailhead
- Point of Interest
- Food Service
- Warming Hut/Shelter
- Overnight Lodging
- Historic Fire Lookout (closed in winter)

Snowmobiles yield to all other users.

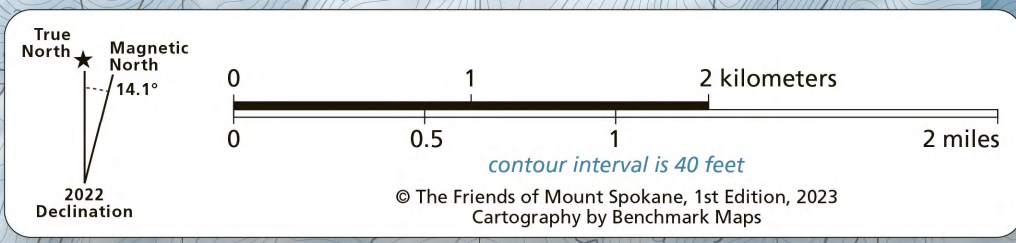
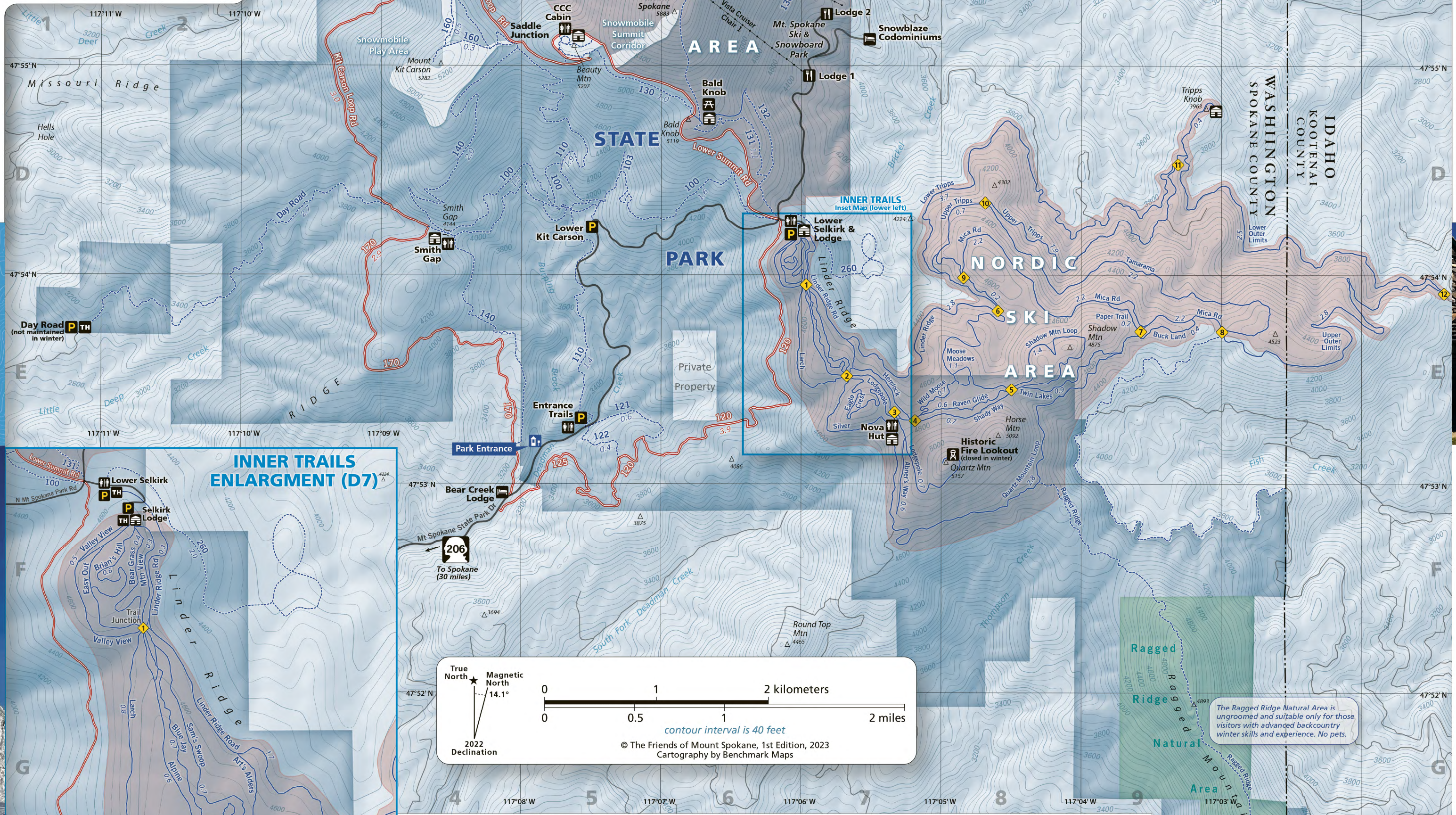


CONTACT
Ranger Station
Mount Spokane State Park
26107 N Mt Spokane St Park Dr
Mead, Washington 99021
509-238-4258

PARK HOURS
Day-Use areas:
December-March
7:00am-Dusk

IN CASE OF EMERGENCY
DIAL 911

- NORDIC TRAILS**
Trail Name, map location, mileage, (km)
- Easy Trails**
Abner's Way (to turnaround) E7 0.6mi (1.0km)
Linder Ridge (Selkirk-Jct 1) F2 0.3mi (0.5km)
Linder Ridge (Jct 1-4) E7 1.7mi (2.7km)
Lodgepole (Jct 2-Nova Hut) G2 0.4mi (0.7km)
Lower Outer Limits D10 2.5mi (4.4km)
Mica Road (Jct 6-9) E8 0.2mi (0.4km)
Mica Road (Jct 8-9) E9 2.2mi (3.5km)
Shady Way H3 0.7mi (1.1km)
Valley View F1 0.5mi (0.8km)
- Moderate Trails**
Blue Jay G2 0.7mi (1.1km)
Larch G2 0.8mi (1.3km)
Lower Tripps D7 3.7mi (5.9km)
Moose Meadows E8 1.1mi (1.8km)
Mountain View F2 0.3mi (0.5km)
Paper Trail E9 0.2mi (0.3km)
Raven Glide E8 0.6mi (1.0km)
Sam's Swoop G2 0.7mi (1.1km)
Tripps Knobb (Warming Hut) D9 0.4mi (0.7km)
Twin Lakes E8 1.4mi (2.2km)
Upper Outer Limits E10 2.8mi (4.5km)
Upper Tripps (Jct 9-10) D8 0.7mi (1.2km)
Upper Tripps (Jct 10-11) D8 1.9mi (3.1km)
Wild Moose E7 0.7mi (1.2km)
- Difficult Trails**
Alpine G2 0.6mi (1.0km)
Art's Alders G2 0.2mi (0.3km)
Bear Grass F2 0.4mi (0.7km)
Brian's Hill F2 0.6mi (1.0km)
Buck Land E9 0.4mi (0.6km)
Eagle Crest G3 1.1mi (1.8km)
Hemlock G3 0.5mi (0.8km)
Lodgepole (Nova-Lookout) E7 0.7mi (1.0km)
Quartz Mountain Loop E8 2.8mi (4.5km)
Shadow Mountain E8 1.4mi (2.2km)
Silver H2 0.8mi (1.3km)
Tamarama D9 2.2mi (3.5km)



PARK RULES
Mount Spokane State Park has over 100 miles of winter recreational trails accessed from 4 sno-park parking areas. Park visitors must abide by park rules so that all users may enjoy their visit. It is important to be aware of unique restrictions that might apply to certain parts of the park such as restricted user groups for specific trails (for instance, Nordic trails are restricted to only Nordic skiers). The following general rules apply to all areas:

- Pets are allowed in most areas of Mount Spokane State Park and must always be under physical control on a leash no more than eight feet long. Owners are responsible for cleaning up after their pets. Pets are not allowed in the Nordic Ski Area except during specified skier hours and only on specific skier trails and only with an actual skier harness. Leashed pets are not allowed on Nordic trails.
- Please do not harm wild plants or animals. Feeding of wildlife is strictly prohibited.
- Alcoholic beverages are only permitted in designated areas.
- Tracked vehicles such as snowmobiles, snow bikes, and tracked sleds by sides are only allowed on designated and groomed snowmobile trails and designated play areas. Fat tire bikes, snowshoes, and snowmobiles are not allowed on the Nordic trail system.
- Sledding is not allowed anywhere in the park.
- Hunting is prohibited in all Washington State Parks.
- Washington state laws are enforced in Washington State Parks.

For more info or to view the complete list of park rules visit: www.parks.state.wa.us/documentcenter/view/8840/park-rules

BE AWARE OF AVALANCHE DANGER!
check www.nwac.us before entering the park

SNO-PARK PERMIT (December 1st-March 31st)
A Sno-Park Permit is required for day visits to Washington State Sno-Parks. There are 120 sno-parks in Washington with 80 of them designated primarily for snowmobiling. The permits provide plowing and sanding of roads and parking areas.

- \$25 One-Day Permit good for all allowed winter activities
- \$50 Seasonal Sno-Park Permit good for most winter activities except Nordic skiing
- \$70 Special Groomed Trail Permit is required along with the Seasonal Sno-Park Permit to access the Nordic ski areas.

Sno-Park Permits can be purchased online at: www.epermits.parks.wa.gov/Store/SNO/SnoChoice.aspx or in person. Sno-Park Permits are also available through third-party vendors. Transaction and dealer fees may apply.

Parking at Mount Spokane State Park requires the appropriate Sno-Park Permit to be displayed in the parked vehicle. Sno-Park Permits are valid at Mount Spokane from December 1st through March 31st each winter. The fine for parking without the appropriate Sno-Park Permit is \$99.00. Guests of Mount Spokane Ski and Snowboard Park do not need a Sno-Park Permit when parking at the ski resort, parking is included with the price of the lift ticket.

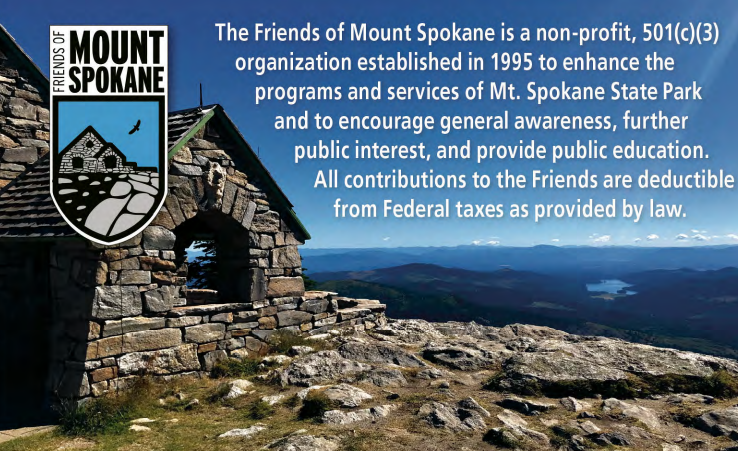
PARKING
Mount Spokane State Park is located northeast of Spokane, Washington. The park entrance and ranger station are 15 miles east of State Highway 2 on State Route 206, also known as Mount Spokane State Park Drive. There is short-term parking at the ranger station where visitors can purchase appropriate parking passes and obtain trail maps & current park information.

Entrance Trail Parking (E5) There is a vault toilet, information kiosk, and access to several trails. Across the State Route 206 from the kiosk is the Entrance Loop Trail, which is a good introductory snowshoe trail.

Lower Kit Carson Parking (D5) Across State Route 206 from the parking area is an information kiosk and access to several snowshoe trails. Most popular is the 1.2-mile trip along the Kit Carson Loop Road to the snowshoe warming hut at Smith Gap. There is a picnic area and vault toilet located at Smith Gap.

Lower Selkirk Parking (F2) Informally known as the "snowmobile lot," this large parking area is frequently used for snowmobile trailers and for staging snowshoeing/ski touring. There is a vault toilet, information kiosk, and access to several trails.

Selkirk Lodge Parking (F2) Parking in this lot requires the Special Groomed Trails Permit, or a One-Day Permit. The large lot is generally reserved for Nordic skiers. The Selkirk Lodge is open during the winter and has restrooms with running water and flush toilets. There is also a vault toilet adjacent to the lodge. There are no hiking, snowshoe, or snowmobile trails at the Selkirk Lodge. Those activities are prohibited on the Nordic ski trails throughout the Mount Spokane Sno-Park Season (December 1-March 31).



CONTACTS
friends@mountspokane.org | www.mountspokane.org

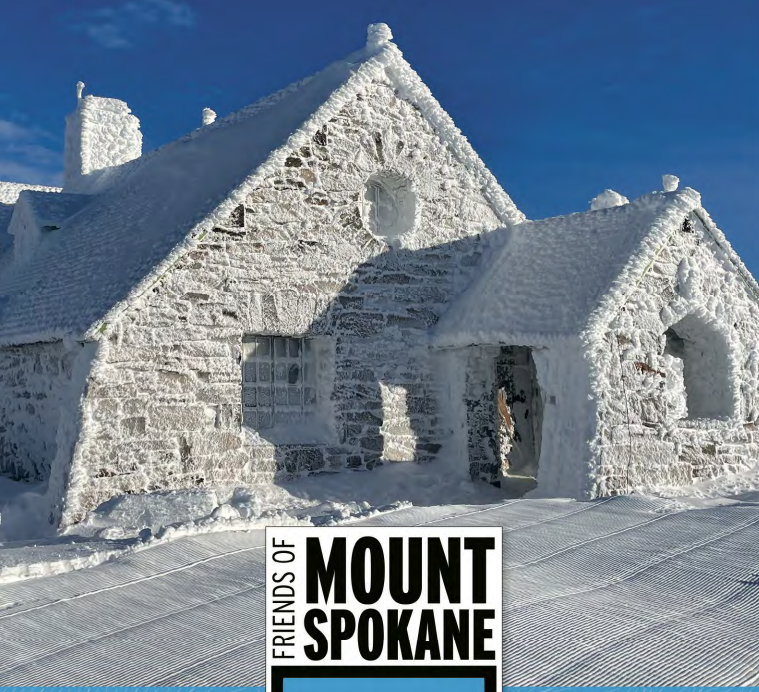
INVEST IN YOUR PARK TODAY!
Your financial contribution will ensure Mount Spokane State Park's future. You love the park, show your commitment with a financial donation.

SHARE YOUR TIME. VOLUNTEER!
You love visiting Mt Spokane; join us as a park volunteer! We need to make sure our park is maintained and improved for visitors today, and for years to come.

LEAVE OUR PARK BETTER THAN YOU FOUND IT
There's so much still to do. We're looking for more volunteers and financial support

MOUNT SPOKANE STATE PARK ALL-SEASON TRAILS SYSTEM MAPS

- Winter & Summer Maps
- Guide to popular activities
- Resource for regulations



MOUNT SPOKANE STATE PARK SUMMMER TRAILS MAP

- Main Paved Road
- Main Unpaved Road
- Backcountry, Dirt Road (not regularly maintained)
- Trail, Trail Number/Name, Mileage & Trail Jct
- Mount Spokane State Park
- Ragged Ridge Natural Area Preserve

PRIVATE PROPERTY
Please do not trespass. Know where you are located at all times and obey all posted signs.
Mount Spokane State Park borders Inland Empire Paper Company property. Recreational access to IEP Property requires a separate permit from IEP and information can be found at: www.iepc.com/forestry/rec-use.

- Entrance/Ranger Station
- Discover Pass Fee Terminal
- Toilet
- Parking
- Campground
- Trailhead
- Picnic Area
- Point of Interest
- Lookout Tower
- Shelter
- Overnight Lodging

Most trails at Mount Spokane are multi-use trails. On multi-use trails it is important to know who has the right of way. Please be aware of the trail etiquette triangle and yield accordingly.



When hikers cross paths along a trail, please yield right-of-way to the uphill hiker(s).

TRAILHEADS
Parking capacity and permitted uses differ at each trailhead. Prior to recreating, review the allowed uses posted at the trailhead.

SHORTER & EASIER TRAILS
Entrance Loop (E5) Park at the Entrance Trails Parking Area just past the Ranger Station. The hike begins across the road from the Kiosk. Begin on Trail 121 and ascend along a peaceful tributary of Deadman Creek. Turn right on Trail 120 for a short distance and then turn right again on Trail 122 to return to the parking area. Total distance is about 1.5 miles.

Smith Gap Loop (D5) Park at the Lower Kit Carson Parking Area. The hike begins across the road from the parking area. The first part of the hike follows the KC Loop Road for about 1.3 miles and arrives at the picnic area at Smith Gap where you will find a warming hut and vault toilet. The shorter version of this hike returns to the parking area the same way you came. The loop version returns to the parking area using Trail 100 directly across from the vault toilet. Total distance is about 3.1 miles returning on Trail 100, about 2.6 miles if you return on the KC Loop Road. This trail is popular with hikers, mountain bikers, and horseback riders.

Quartz Mountain Fire Lookout (D6) Park at the Selkirk Lodge Parking Area. Up a short hill to the right of the Selkirk Lodge is a large map of the Nordic ski area. Follow Mountain View to Junction 1. From there take Alpine to Junction 2. From there take Lodgepole to Junction 3. From there, continue straight on Lodgepole up to the Fire Lookout. There is a vault toilet and picnic area at the Nova Hut that you will pass by on the way to the Fire Lookout. Total distance on this route is about 4.5 miles round trip. This trail is popular with hikers, mountain bikers, and horseback riders.

LONGER & MORE DIFFICULT TRAILS
Base to Summit (E5) Park at the Entrance Trails Parking Area to begin this difficult out and back trail. Begin on Trail 110 just to the right of the kiosk at the parking area. Follow Trail 110 uphill until you reach Saddle Junction (C4). At Saddle Junction, follow Trail 140 as it climbs through several switchbacks up to the summit of Mount Spokane. Total distance of this hike is just over 10 miles round trip, with an elevation gain of about 2,650 feet. This route is popular with downhill mountain bikers, and they can be descending at high speeds. Please be watchful for approaching bike traffic.

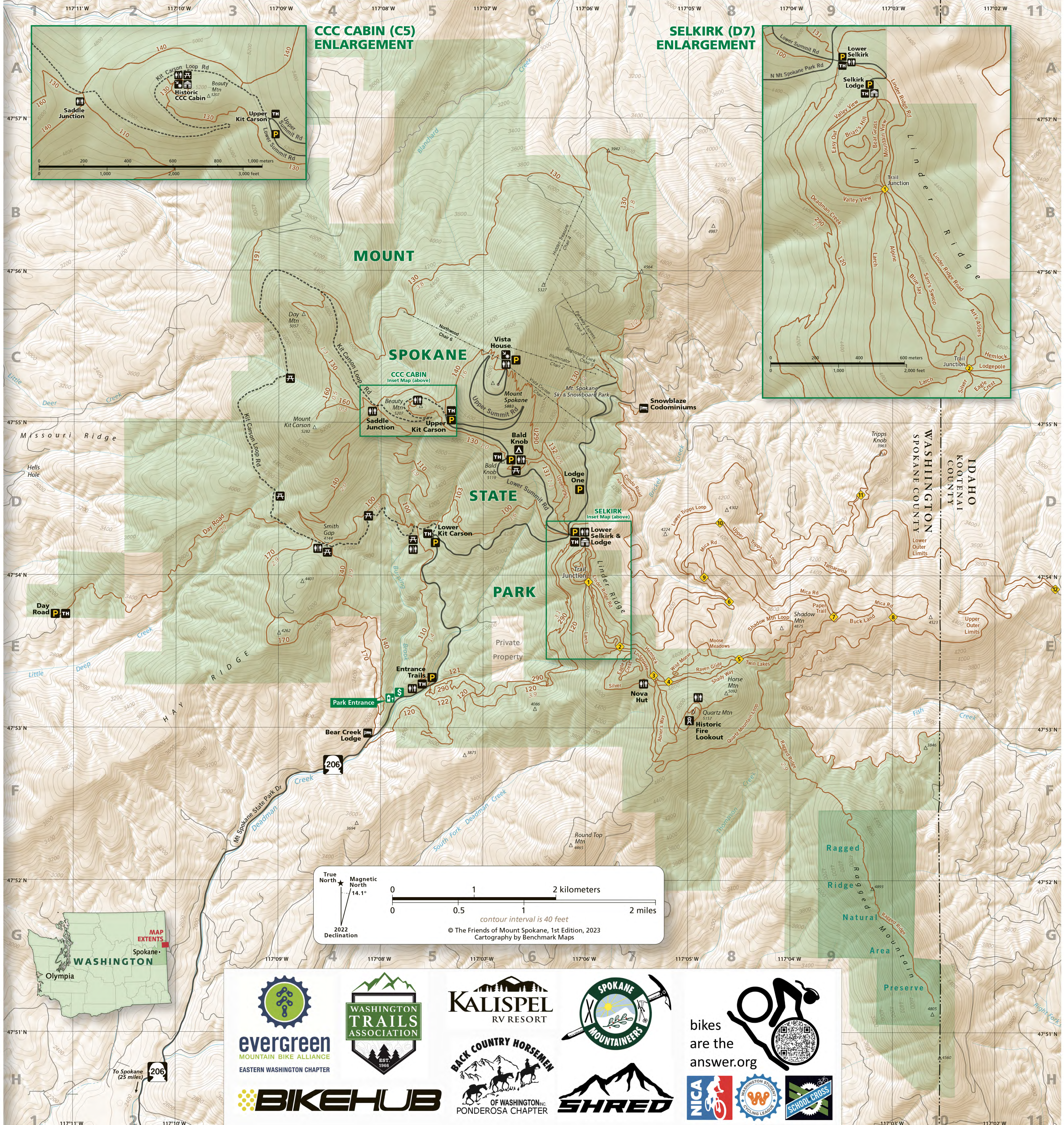
Ragged Ridge Natural Area Preserve (D6) Park at the Selkirk Lodge for this long and stunning out and back hike. From the beginning of the Nordic trail system, follow Mountain View to Junction 1. Take Alpine to Junction 2. Take Lodgepole to the Nova Hut. From the Nova Hut follow the Quartz Mountain Loop Trail (trail starts just to the right of the vault toilet) for 1.8 miles and look for the trail marker on the right side of the trail for Ragged Ridge. Ragged Ridge is a Natural Area Preserve, and as such, bikes and pets are not allowed. Follow the Ragged Ridge Trail to the rocks at the south end for perhaps the best view in the park. Total distance of this hike is about 13 miles round trip.

Three Summits Loop (D5) Park in the Upper KC Loop Parking Area. Go through the gate near the kiosk and follow the KC Loop Road to Saddle Junction. At Saddle Junction follow Trail 160 up to the summit of Mt Kit Carson. From the summit of Mt Kit Carson retrace your steps back down to the junction with Trail 130, veer left and follow Trail 130 to the summit of Day Mountain. From Day Mountain, follow trail 130 back down to Saddle Junction. At Saddle Junction, cross the KC Loop Road and follow Trail 140 to the summit of Mount Spokane. Return via Trail 140 to Saddle Junction and then follow the KC Loop Road back to the parking area. Total distance of this difficult hike is about 7 miles. This route is popular with hikers, mountain bikers, and horseback riders.

CAMPGROUNDS & CAMPING

- Bald Knob = 8 sites open June-September for tents and RVs (30ft max RV length)
- Quartz Mountain Lookout = Hike-in or bike-in access only for up to 4 people (no pets) with a 2-night minimum atop Quartz Mountain (E8)
- Dispersed camping is not allowed anywhere in Mount Spokane State Park.

Reservations for campsites and the lookout can be made online at www.parks.state.wa.us or by calling 888-CAMPOUT (888-226-7688).



- PARK RULES**
Mount Spokane State Park has over 100 miles of multi-use trails accessed from 9 Discover Pass trailheads and an 8-site campground. Park visitors must abide by park rules so that all users may enjoy their visit. It is important to be aware of any restrictions that might apply to certain parts of the park, such as the natural areas. The following general rules apply to all areas:
- Pets are allowed in most areas of Mount Spokane State Park and must always be under physical control on a leash no more than eight feet long. Owners are responsible for cleaning up after their pets. Pets are not allowed in Ragged Ridge Natural Area Preserve.
 - Please do not harm wild plants or animals. Feeding of wildlife is strictly prohibited.
 - Alcoholic beverages are only permitted in designated campgrounds and picnic areas.
 - Camping is only allowed at Bald Knob Campground.
 - Hunting is prohibited in all Washington State Parks.
 - All Washington state laws are enforced in Washington State Parks.
- For more info or to view the complete list of park rules visit: www.parks.state.wa.us/documentcenter/view/8840/park-rules

DISCOVER PASS (April 1st–November 30th)
The Discover Pass is required for day visits to Washington State Parks and for access to other state-managed recreation lands. The pass provides access to millions of acres of parks, wildlife areas, trails, natural areas, and water access sites. The annual pass is transferable between two vehicles.

\$30 annual Discover Pass
\$10 one-day pass

The Discover Pass can be purchased online, by phone, or in person. For details visit www.discoverpass.wa.gov or call 866-320-9933. The Discover Pass is also available through third-party vendors. Transaction fees may apply. Thank you for supporting Washington's state recreation lands.

Parking at Mount Spokane State Park requires a current Discover Pass to be displayed in the parked vehicle. The Discover Pass is valid at Mount Spokane from April 1st through November 30th each year. The fine for parking without a valid Discover Pass is \$99.00

PARKING
Mount Spokane State Park is located northeast of Spokane, Washington. The park entrance and ranger station are 15 miles east of State Highway 2 on State Route 206, also known as Mount Spokane State Park Drive. There is short-term parking at the ranger station where visitors can purchase appropriate parking passes and obtain trail maps & current park information.

Entrance Trails Parking (E5) There is a vault toilet, kiosk, and access to several trails on both sides of State Route 206.

Lower Kit Carson Parking (D5) Across State Route 206 from the parking area is a kiosk and access to several trails. There is a picnic area and vault toilet located at Smith Gap.

Lower Selkirk Parking (A9) Informally known as the "snowmobile lot", this large dirt parking lot has ample room for horse trailers. There is a vault toilet, kiosk, and access to numerous trails on both sides of the road.

Selkirk Lodge Parking (A9) Selkirk Lodge is open in the summer for special events. There is ample parking for horse trailers and there are many miles of well-marked trails to explore in this area of the park. There are vault toilets adjacent to the building.

Lodge One Parking (D6) Your Discover Pass also allows you to park in the Mount Spokane Ski & Snowboard Park's Lodge One Parking Area for summertime day-use recreation.

Bald Knob Parking (D6) Bald Knob has 8 summer-only campsites, a day use picnic area, and rest room facilities.

Upper Kit Carson Parking (A3) This small dirt parking area provides access to several trails and some excellent huckleberry picking during late July & August.

Mt Spokane Summit (C6) There is a small, paved parking area at the top of Mt Spokane along with a vault toilet. The parking area allows you access to the Historic Vista House.

Day Road Gate (E1) A small dirt parking area with room for about six cars.

- FORAGING RULES**
Foraging for edibles to be used for personal consumption is allowed in most areas of Mount Spokane State Park and is governed under the Washington Administrative Code (WAC) 352-28-030. Highlights of the WAC include:
- "Personal Consumption: The recreational harvest, possession, or transport of edible plants and edible fruiting bodies including but not limited to, mushrooms, berries, and nuts, is allowed up to an amount of two gallons per person, per day, unless otherwise posted at the park." Harvesting is prohibited in Ragged Ridge Natural Area Preserve.
 - "Harvest techniques that involve raking or other techniques that have the potential to degrade park natural or cultural resources are prohibited." Harvesting must be done strictly by hand—no tools.
 - Any local restrictions to harvesting will be posted at park entrances and are at the discretion of the director or designee.
 - Any harvesting for commercial gain is prohibited.

NATURAL AREAS
State Park Natural Area Preserves are designated for preservation, restoration, and interpretation of natural processes and/or features of significant ecological, geological or paleontological value while providing for low-intensity outdoor recreation activities as subordinate uses. Ragged Ridge Natural Area Preserve (G9) observes the following restrictions:

- Respect wildlife
- Dispose of waste properly (pack it out, please)
- No Off-Highway Vehicles
- No bicycles, horses, or pets of any kind
- No picking or collecting wildflowers
- No rockhounding
- No alcohol
- No fires or overnight camping

Please leave no trace.

CONTACT
Mt Spokane St Park Ranger Station
26107 N Mt Spokane St Park Dr
Mead, Washington 99021
509-238-4258

PARK HOURS
Day-Use areas:
April–November
6:30am–dusk

IN CASE OF AN EMERGENCY DIAL 911

