



Mount Spokane Area Butterfly Guide

Records as of November, 2010.

The butterflies of Mt Spokane and its environs have been the study of entomologists and conservationists for decades: but not recent ones! John Hinchliff's An Atlas of Washington Butterflies, published in 1996, showed that many of the state's most notable butterfly scholars had done fieldwork on Mount Spokane. Despite the brevity of their visits, they found some of the more rare species of Eastern Washington. And while Hinchliff's atlas detailed extremely specific species records for more than forty different species occurrences on the mountain, it was based on observations that had scarcely been updated since our local conservation hero, Tom Rogers, was netting and collecting butterfly specimens in the 1960's and 1970's.

With this need for updated field records in mind, I am delighted to offer the following on line field guide to local or visiting naturalists. I am neither trained as a biologist nor as a photographer, but have been very fortunate to have support and mentoring in both disciplines from various members of the Washington Butterfly Association, who are very interested in the butterfly fauna of our area.

I would especially like to thank Idie Ulsh, a bird and butterfly photographer of exceptional ability and broad experience, and Jonathan Pelham and Robert M Pyle, two resident Washington lepidopterists whose published works and field experience would take pages and pages to reference, and who have yet found or made time to answer my questions as to field marks and life histories of the various butterflies

I have been finding and getting stumped by in the last four years. Too many other butterfly scholars and enthusiasts have helped for me to name them here. Locally, Cris Currie has been extremely helpful as a naturalist-guide into the less traveled areas of park lands.

This little guide cannot be considered complete, only a "work in progress". You are invited to contact me to confirm I.d.'s of butterfly sightings you are not sure of, or especially of ones that you suspect are not on the list.

Please write John Baumann, at jpb6_18_56@yahoo.com. Better still, get involved with the WBA, Washington Butterfly Association, online at www.naba.org/chapters/nabaws, where many individuals with expertise in this field of study will take time to help answer your questions.

We contemplate starting a local chapter of WBA even as I write. Some other very helpful online resources are www.butterfliesandmoths.org (BAMONA) and www.butterfliesofamerica.com. Fred Bentler's Eastern Washington wildlife website is also very good, <http://www.bentler.us/easternwashington/animals/insects/butterflies/default.aspx>.

All photos and text in this are under my copyright, and may not be used without my explicit consent.

Enjoy Mount Spokane's butterflies! We're quite fortunate to have such biodiversity in our area, and more fortunate still to have so much of the area under protection of Washington State Parks.

List and Photos of Species

Common Name **scientific name** **Most Recently Seen**

1. Long Dash Skipper *Polities mystic* 7/10/1963
(no photo available)

2. Woodland Skipper *Ochlodes sylvanoides* 8/20/2009



3. Garita Skipperling *Oarisma garita* no date available



4. Clodius Parnassian *Parnassius clodius* no date available



5. Rocky Mtn Parnassian *Parnassius smintheus*

6/27/1964



6. Western Tiger Swallowtail

Papilio rutulus

7/14/2010



7. Pale Swallowtail

Papilio eurymedon

7/14/2010



8. Anise Swallowtail

Papilio zelicaon

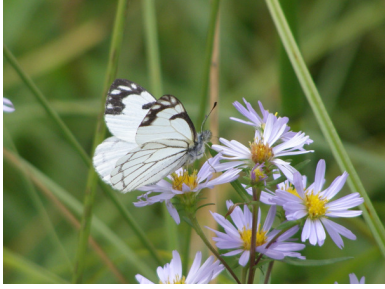
not yet confirmed



9. Pine White

Neophasia menapia

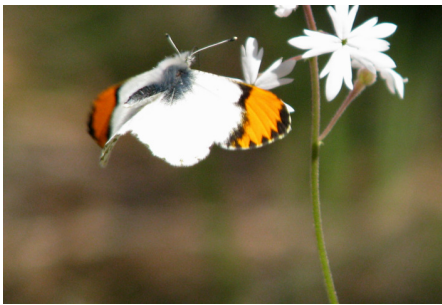
9/21/1971



10. Stella Orange Tip

Anthocharis stella

7/14/2010



11. Clouded Sulphur

Colias philodice

7/24/1965



12. Queen Alexandra's
Sulphur

Colias alexandra

7/10/1964



13. Blue Copper

Lycaena heteronea

7/11/1962



14. Edith's Copper

Lycaena editha,

8/20/2009



15. Mariposa Copper

Lycaena mariposa

7/18/1975



16. Purplish Copper

Lycaena helloides

6/12/1969



17. Sylvan Hairstreak

Satyrium sylvinum

8/13/1963



18. Sheridan's Green
Hairstreak

Callophrys sherdanii

7/5/1970



19. Western Pine Elfin

Callophrys eryphon

6/13/1969



20. Grey Hairstreak

Strymon melinus

8/20/2009



21. Western Tailed Blue *Cupido amyntula*

9/21/1971



22. Echo Azure *Celestrina echo*

likely seen 7/14/2010



23. Northern Blue *Plebejus idas*

7/18/1970



24. Greenish Blue *Plebejus saepiolus*

Plebejus saepiolus

no date available



25. Boisduval's Blue

Plebejus icarioides

7/14/2010



26. Silvery Blue

Glaucopsyche lygdamus

7/14/2010



27. Zerene Fritillary

Speyeria zerene

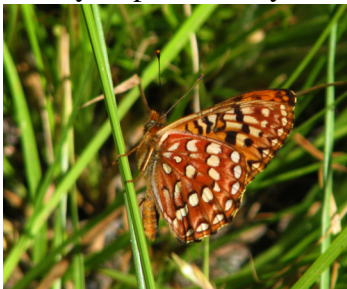
8/20/2009



28. Hydaspe Fritillary

Speyeria hydaspe

7/15/2010



29. Callippe Fritillary *Speyeria callippe* 7/24/1965



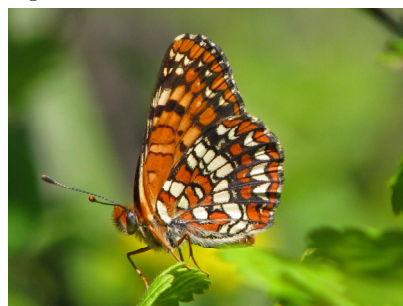
30. Great Basin Fritillary *Speyeria egleis* 6/20/1939
(no photo available)

31. Atlantis Fritillary *Speyeria atlantis* 7/31/ ??
(no photo available)

32. Western Meadow Fritillary *Boloria epithore* 7/14/2010



33. Northern Checkerspot *Chlosyne palla* 7/15/1962



34. Field Crescent

Phyciodes pulchella

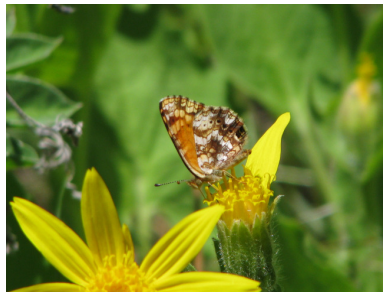
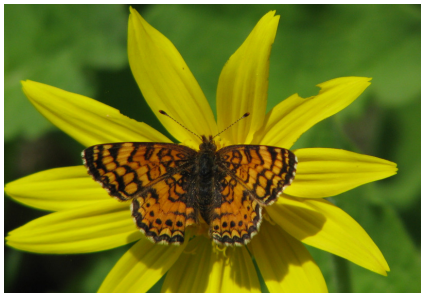
no date available



35. Mylitta Crescent

Phyciodes mylitta

9/21/1971



36. Satyr Comma

Polytonia satyrus

8/20/2009



37. Green Comma

Polytonia faunus

8/20/2009



38. Milbert's Tortoiseshell

Aglais milberti

7/14/2010



39. California Tortoiseshell

Nymphalis californica

8/17/1959



40. Compton's Tortoiseshell
(no photo available)

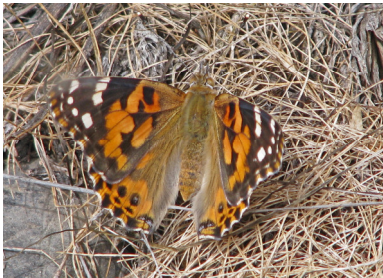
Nymphalis vau-album

8/11/1962

41. Painted Lady

Vanessa cardui

8/20/2009



42. Lorquin's Admiral

Limenitis lorquini

7/3/xxxx



43. Ochre Ringlet



Coenonympha tullia,

8/20/2009

44. Common Wood Nymph



Cercyonis pegala

not yet confirmed

45. Small Wood Nymph



Cercyonis oetus

8/11/62

46. Common Alpine



Erebia epipsodea

7/4/2008



47. Chryxus Arctic



Oenis chryxus

6/30/1949

